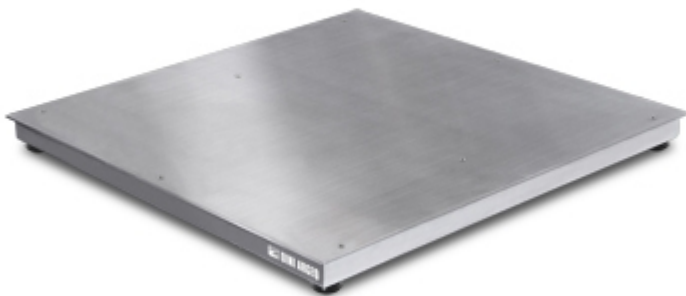


ETI_I NOX_C6

ETI SERIES 4-C6 CELLS STAINLESS STEEL PLATFORMS



C6

Electronic STAINLESS STEEL weighing low profile platforms with removable loading plate fitted with IP68 STAINLESS STEEL C6 approved load cells. Suitable for creating scales and electronic weighing systems for all types of industrial and commercial applications. Available in high resolution and suitable for ATEX zones.

The best solution
for advanced industrial
applications

MAIN FEATURES

- Fitted with 4 STAINLESS STEEL shear-beam C6 load cells each with 350 Ohm input resistance. OIML R60 approved and protection against dust and immersion according to IP68 standards.
- Stainless steel bearing tubular structure, with removable stainless steel plate and IP67 junction box housing.
- Adjustable, stainless steel shock-proof jointed feet and integrated level.
- Shielded 5m long 6-pin cable for connection to a weight indicator.
- Fitted with IP68 connector.
- Up to 15 Vdc power supply.

OPTIONS ONLY AVAILABLE AT TIME OF ORDER

- Calibration with CE-M single or double range approval.
- High resolution models for internal factory use.
- AVAILABLE ON REQUEST: reinforced version for weighing of concentrated loads (coils, forklifts ecc.). Structure in AISI316 stainless steel.

ACCESSORIES

- Column support for weight indicator.
- Frames for flush floor installation.
- Access ramps.
- Models with special sizes and capacities on request.

OPTIONS FOR ATEX VERSION

- CCATEX: ATEX certificate for each load cell.
- JB4QA: ATEX certified junction box.
- DCATEXMECH: ATEX declaration for the PLATFORM (for the load cells ATEX declaration see CCATEX-1 code). Option to be offered only if the platform is ordered without the indicator, if so, refer to the chosen weight indicator available certifications.

DETAIL 1



DETAIL 2



VERSIONS

Available versions

Codice	I x w x h (mm)	N° celle	Max (kg)	d (g)	M (g)*	M 2R (g)*	d HR (g)*
ETAI3C6	1000x1000x90	4x220kg	300	50	50	--	20
ETAI6C6	1000x1000x90	4x500kg	600	100	100	--	50
<u>ETAI15C6</u>	1000x1000x90	4x500kg	1200	200	200	100-200	100
<u>ETMI3C6</u>	1000x1250x90	4x220kg	300	50	50	--	20
<u>ETMI6C6</u>	1000x1250x90	4x500kg	600	100	100	--	50
<u>ETMI15C6</u>	1000x1250x90	4x500kg	1200	200	200	100-200	100
ETBI3C6	1250x1250x90	4x220kg	300	50	100	--	20
ETBI6C6	1250x1250x90	4x500kg	600	100	100	--	50
ETBI15C6	1250x1250x90	4x500kg	1200	200	200	100-200	100
ETBI30C6	1250x1250x90	4x2000kg	3000	500	500	--	200
ETDI6C6	1250x1500x115	4x500kg	600	100	100	--	50
ETDI15C6	1250x1500x115	4x500kg	1200	200	200	100-200	100
ETDI30C6	1250x1500x115	4x2000kg	3000	500	500	--	200
ETEI6C6	1500x1500x115	4x500kg	600	100	100	--	50
ETEI15C6	1500x1500x115	4x500kg	1200	200	200	100-200	100
ETEI30C6	1500x1500x115	4x2000kg	3000	500	500	--	200
ETFI6C6	1500x2000x130	4x500kg	600	100	100	--	50
ETFI15C6	1500x2000x130	4x500kg	1200	200	200	100-200	100
ETFI30C6	1500x2000x130	4x2000kg	3000	500	500	--	200

(*) Divisions obtainable only with the relative options, in combination with Dini Argeo weight indicator.

(**) Multi interval version available only 2x3000e.



“YOUR WORLDWIDE PARTNER FOR WEIGHING”

DINI ARGEO
FRANCE sarl
France

DINI ARGEO
GMBH
Germany

DINI ARGEO
UK Ltd
United Kingdom

DINI ARGEO WEIGHING
INSTRUMENTS Ltd
China

DINI ARGEO
OCEANIA
Australia



COMPANY HEADQUARTERS

Via Della Fisica, 20
41042 Spezzano di Fiorano Modena • Italy
Tel. +39.0536 843418

SERVICE ASSISTANCE

Via Dell'Elettronica, 15
41042 Spezzano di Fiorano Modena • Italy
Tel. +39.0536 921784



SALES AND TECHNICAL ASSISTANCE SERVICE